

ML50C-PD DALI LED Driver

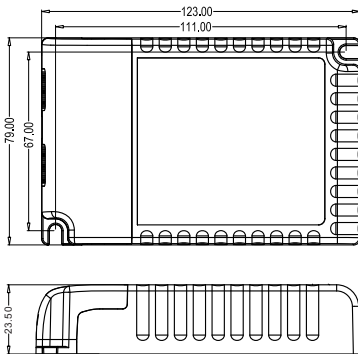
50W



- Multi output current and voltage selectable via DIP switch
- Primary dimming with PUSH button
- Built-in DALI interface
- Protection: Short circuit / Over voltage / Over temperature
- Press-in terminals in primary and secondary side, easy assembly
- Dimming level memory at mains restores.
- Power supplies synchronization function up to 15 units.



SPECIFICATIONS



unit:mm

Model	ML50C-PD, 1x50W
Rated voltage	220-240V AC, 50/60Hz
Input current	0.26A max.
Power factor	>0.9
Output voltage	67V DC max.
Operating temperature	Ta: 50°C Tc: 85°C
Output current /voltage & load	350mA 6~60V DC 21W max 500mA 6~60V DC 30W max 550mA 6~60V DC 33W max 650mA 6~58V DC 38W max 700mA 6~58V DC 41W max 750mA 6~56V DC 43W max 850mA 6~56V DC 47W max 900mA 6~56V DC 50W max 1050mA 6~48V DC 50W max
Abnormal protection	Output short-circuit protection with auto reset
Overheating protection	Overheating protection with auto rest
EMC standard	EN55015, EN61547
Safety standard	EN61347-1, EN61347-2-13
DALI standard	IEC62386-101, IEC62386-102, IEC62386-207
Certification	CE
Dims	123 x 79x 22 mm
Protection class	IP20, built-in type

APPLICATION



Push dim



Dimming level memory at mains restore



Optional output current



5 Years Guarantee



OUTPUT SELECTION

CONNECTION

1. Start with setting the output current/voltage. The current/voltage can be easily configured by choosing the correct combination of the DIP switches (see table, fig. A).

Push button Switch for Dimming

- On/Off: short push (0.1-1s) on the switch.
- Stepless dimming: Long push (>1s) on the switch.
- for fine tuning of light level: With every other long push, the light level goes the opposite direction.
- Built-in with permanent memory: Light returns to the previous dimming level when switched off and on again, even at power failure.

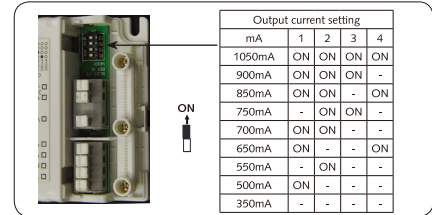


Fig. A

Synchronization FOR PUSH-CONTROL MODE ONLY

Up to 15 pcs drivers can be connected to the same switch, thanks to the programme. This means there is no need for any additional synchrony wire in larger installations, where many drivers should be controlled by one switch.

For the synchronization to work correctly when more than one driver is connected to the same push button, please follow the step below after the drivers are connected:

Do a long push (>15s), the system will now be synchronized

The LED driver supports push dimming function. Push-control and DALI interface can not be connected simultaneously.

WIRING SCHEME

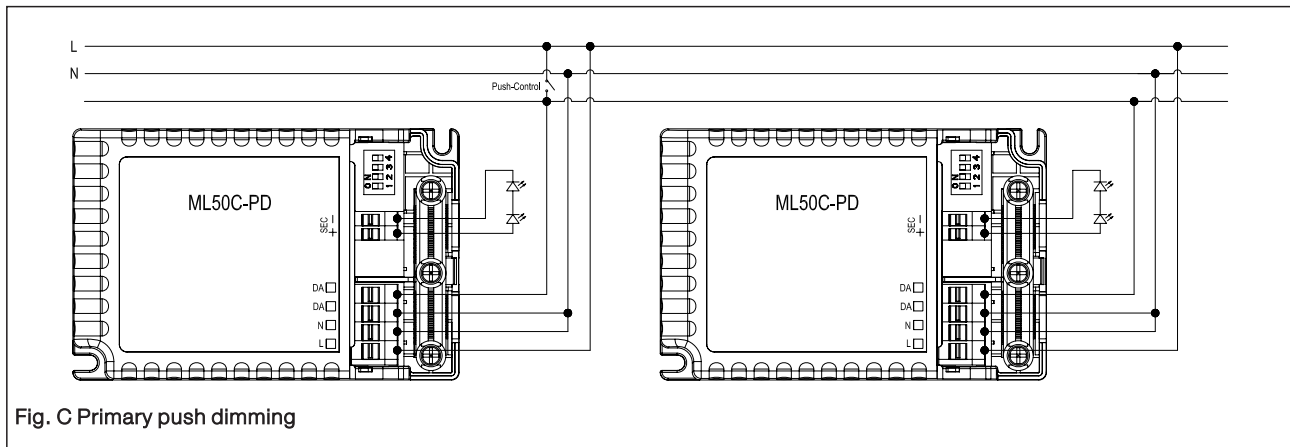


Fig. C Primary push dimming

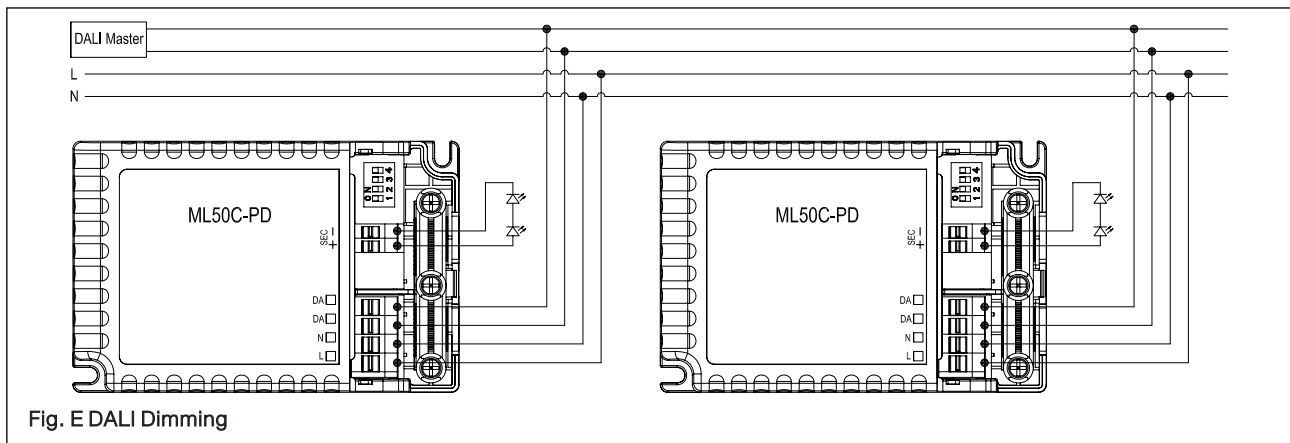


Fig. E DALI Dimming